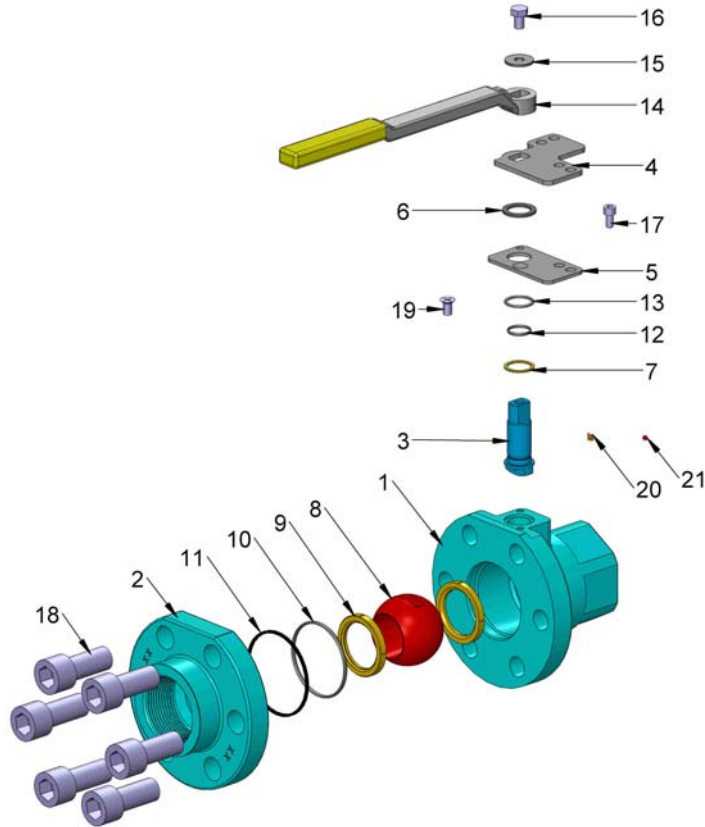




Crown - fusion

Series 326

2-PIECE, REDUCED PORT, BOLTED STRUCTION BLOWOUT-PROOF STEM WITH O-RING, ANTI-STATIC, CONFORMS TO ASME B16.34, NACE MR0175, FIRE SAFE.



Bill of Materials:

ITEM	PART	MATERIAL(STANDARD)		
		CF8M	LCC	WCB
1	BODY	A351 CF8M	A352 LCC	A216 WCB
2	CAP	A351 CF8M	A352 LCC	A216 WCB
3	STEM	A479 316	A479 316	A479 316
4	LOCKING STOPER	304	C/S	C/S
5	LOCKING PLATE	304	C/S	C/S
6	WASHER	PTFE	PTFE	PTFE
7	STEM THRUSR WASHER	NYLON	NYLON	NYLON
8	BALL	A351 CF8M	A351 CF8M	A351 CF8M
9	SEAT	MOLON/DEVLON	MOLON/DEVLON	MOLON/DEVLON
10	O-RING	VITON	VITON	VITON
11	GASKET	GRAPHITE	GRAPHITE	GRAPHITE
12	O-RING	VITON	VITON	VITON
13	O-RING	VITON	VITON	VITON
14	HANDLE	A351 CF8	C/S	C/S
15	WASHER	304	C/S	C/S
16	BOLT	304	C/S	C/S
17	CAP SCREW	304	C/S	C/S
18	CAP SCREW	A320 L7M WITH ZINC PLATING	A320 L7M	A320 L7M
19	BOLT	304	C/S	C/S
20	ANTISITATIC SPRING	304	304	304
21	ANTISITATIC BALL	304	304	304

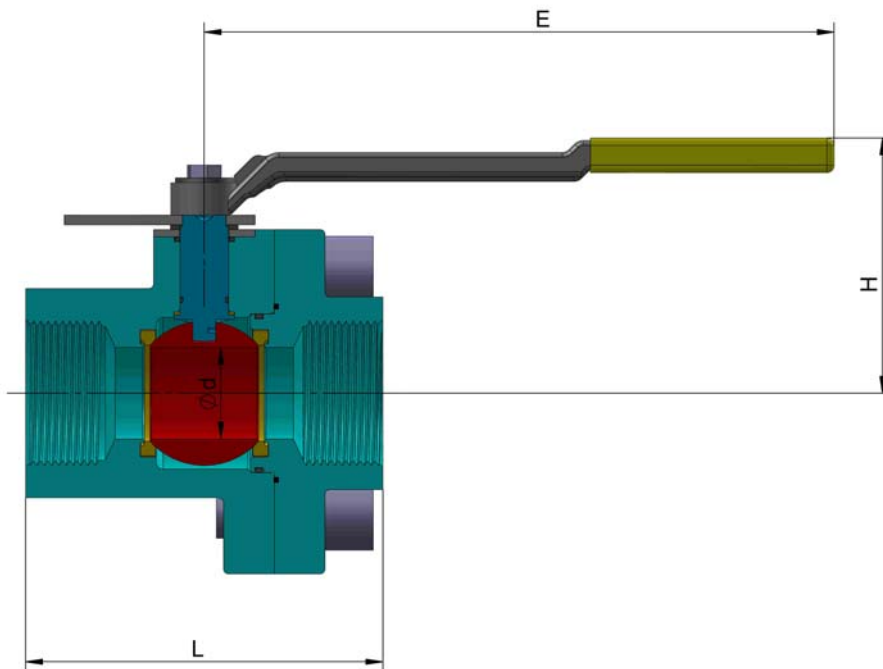
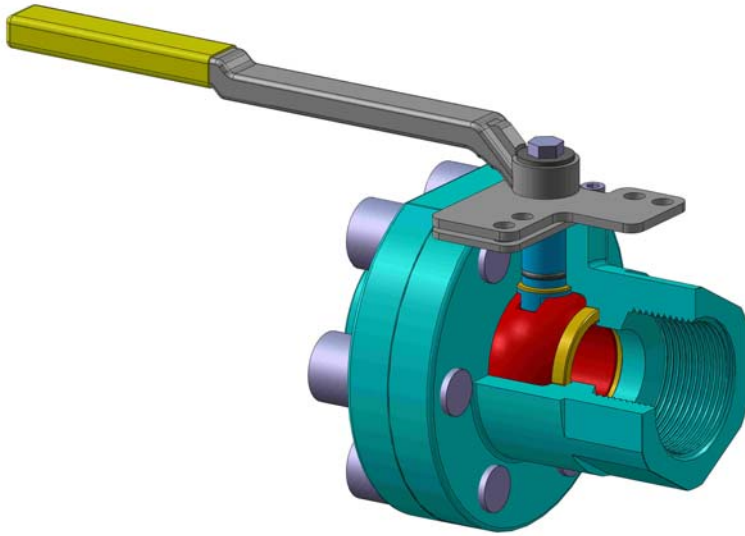
Due to continuous development of our products, we reserve the right to modify our product design or construction without prior notice.





Crown - fusion

Series 326



Weights and Dimensions:

SIZE	CLASS	d		H		L		E		Cv	WEIGHT	
		in / mm	in / mm	in / mm	in / mm	in / mm	in / mm	gal / min	Kg / Lbs			
2" RP	3000WOG	1.50	38	4.02	102	5.51	140	8.63	200	106	6.5	14.3
	5000WOG	1.50	38	4.53	115	5.83	148	10.24	260	108	9.6	21.2

Due to continuous development of our products, we reserve the right to modify our product design or construction without prior notice.

